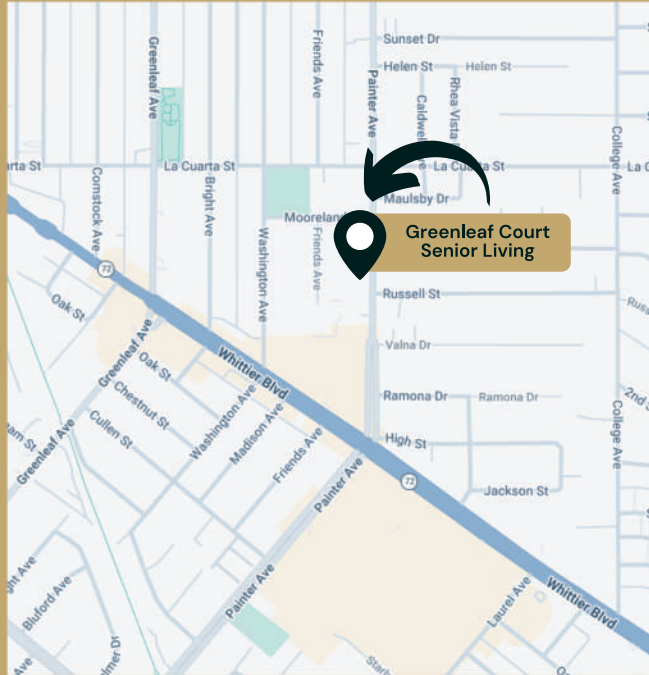




At Greenleaf Court, every resident is known by name, supported with intention, and empowered to live each day with comfort and peace of mind.



- Exer Urgent Care – Whittier (0.1 mi)
- Whittier Public Health Center (0.5 mi)
- PIH Health Whittier Hospital (1.1 mi)
- Whittier Hospital Medical Center (3.5 mi)

CONTACT US

P : 562-698-0596

F : 562-698-0598

8101 Painter Ave.
Whittier, CA 90602

www.greenleafcourt.com



License #197606945



**GREENLEAF
COURT**
SENIOR LIVING



Assisted Living & Short-Term Stays



Compassionate Care, Beautiful Living

Life with Us

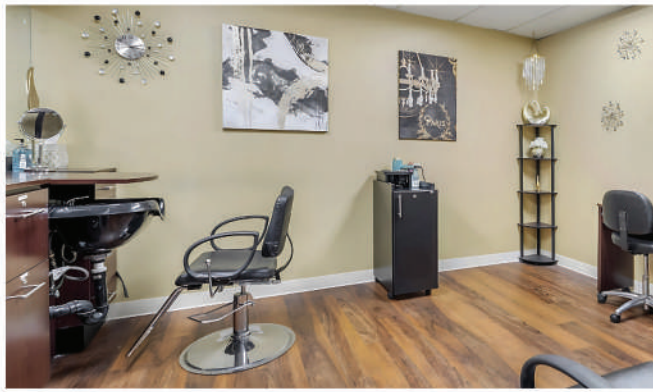
The Greenleaf Court Experience

Life at Greenleaf Court offers personalized care, engaging activities, and the comforts of home — all within a close-knit community where residents are known by name, supported with intention, and empowered to live each day with peace of mind.



Assisted Living

Enjoy the freedom of independence with personalized support when needed. From assistance with personal care and medication management to engaging activities and chef-prepared meals, our community offers a warm, home-like environment where residents can thrive with comfort, confidence, and peace of mind every day.



Amenities & Services



Resident Lounge



Courtyard & Garden



Salon Services



Fitness Programs



Library



Private Dining Room



Pet Friendly Community



Complimentary TV Service



Complimentary Wi-fi



Safe & Secure Environment



Chef-Prepared Meals Daily



Daily Snacks & Refreshments



Housekeeping & Linen Service



Laundry Service



Scheduled Transportation



Emergency Call System



Front Desk Services



Religious Services



24-hour Care Staff



Medication Management



Professional Care Staff



Daily Activities



Enrichment Programs



Music & Games

Short-Term Stays

Whether recovering from an illness or surgery, or providing a loved one with temporary support, our Short-Term Stay program offers personalized care, engaging activities, delicious meals, and all the comforts of home in a warm and welcoming environment.